

#### 01. HOUSING

- Rugged extruded aluminum housing.
- Compact and sleek design.



#### 02. FINISH

- Corrosion resistant polyester powder painted 100µm thickness.
- Standard color of white.



#### 03. LED & OPTICAL ASSEMBLY

- Diffuser with photometric distribution of 120 degree.
- LM-79 test and report is performed in accordance to IESNA standards.



#### 04. MOUNTING

- Surface mount and suspension mount available.

#### 05. Electrical/ Key Components/ Controls

- 90, 305VAC
- High quality LEDs, driver, and components, e.g. MOLEX, WAGO connectors.
- Multiple lighting control options are available: e.g. motion sensor, 1-10V.
- Emergency Power Supply (EPS) available.

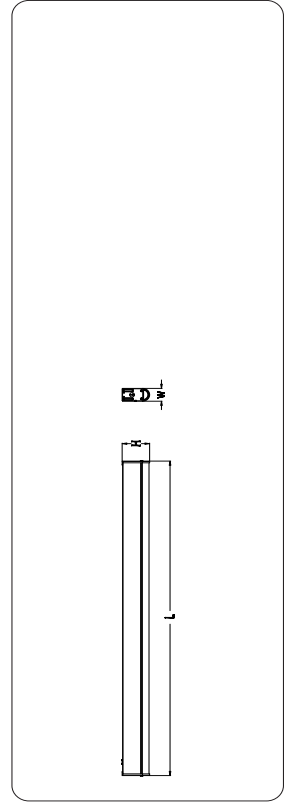
#### DIMENSIONAL DRAWING



White



B18-60  
B18-90  
B18-90



Not all products are qualified in the DLC OPT. To view our DLC-qualified products, please consult the DLC Qualified Products List at [www.dlights.org](http://www.dlights.org)

## TECHNICAL PARAMETERS

Power	40/60/90W
Input	90-305VAC
PF	>0.95
THD	<15%
L70	>50,000H
Operating Temperature	-40°C ~ +50°C
Typical Efficacy	110-130lm/W
ANSI CCT	3000/4000/5000K
Min CRI	80*

\* Standard

IP Rating	IP20
SPD	Optional
Certificate/Qualification	UL/CUL/DLC/LMT9/CE/FiBS
DALI	/
1-10V	Optional
Photocell	/
Smart Control	/
Optic (IESNA)	Type V
Color Options	White

## APPLICATIONS



## ORDERING INFORMATION

MODEL (Nominal Power)	OPTIC LENS	CCT (ANSI)	OPTIONAL COLOR	LIGHTING CONTROL	ACCESSORY INFO
<b>BLB40</b> 40W	T5D Diffuser	30K 3045 ±175K	★ WH White (RAL9001)	00 Not required	Emergency Power Supply (EPS)
<b>BLB60</b> 60W		40K 3985 ±275K		02 Motion sensor	
<b>BLB90</b> 90W		★ 50K 5028 ±283K		05 1-10V dimming	

## BRIEF SPECIFICATIONS

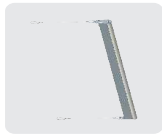
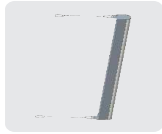
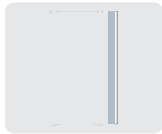
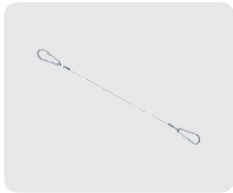
Model No.	System Power	LED type	LEDs	Mounting options	Net Weight (LPC)	Gross Weight (LPC)	Product Dimensions	Carton Dimensions (L*W*H)	Luminous Flux	Efficacy (lm/W)
<b>BLB 30-305VAC</b>										
BLB40	41W	48	48	Surface mount/Suspension mount	2.16kg (4.7lbs)	2.50kg (5.51lbs)	47.36" x 4.93" x 3.67"	41.33lm	4592lm	112
BLB60	62W	80	80		2.39kg (5.27lbs)	2.74kg (6.04lbs)	49.61" x 9.84" x 8.07"	62.50lm	6944lm	112
BLB90	93W	112	112					94.19lm	1045lm	115

★ Regularly stocked item

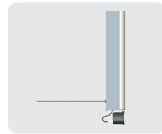
- Example 1: BLB40-T5D-40K-WH-00
- Example 2: BLB60-T5D-40K-WH-02

# CUSTOMIZED SOLUTIONS

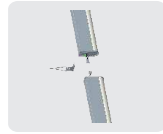
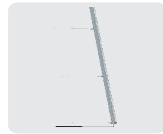
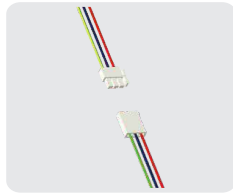
01. Steel Suspension Cable



02. Motion Sensor



03. Linked in Series



04. Up & Down Light

